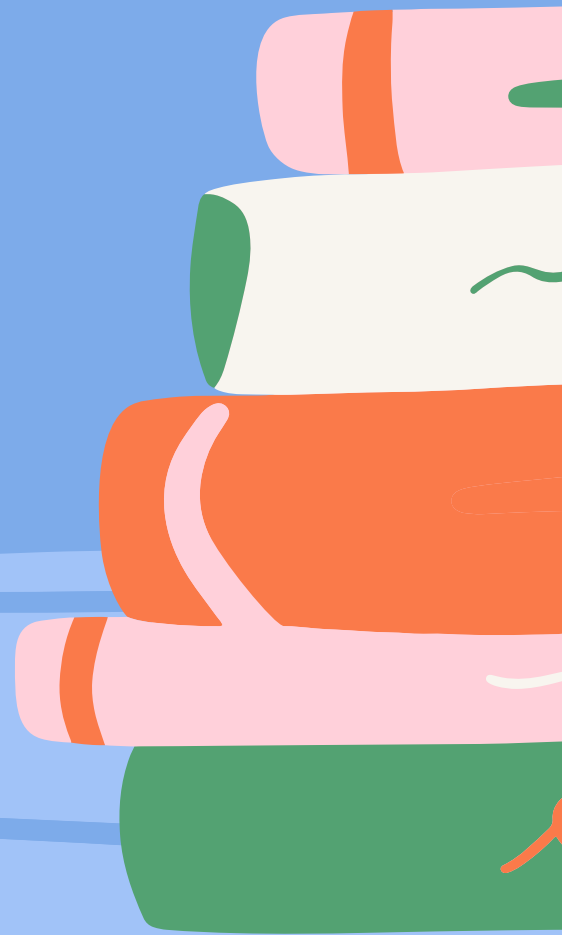


TOCOI CREEK HIGH SCHOOL
2021 - 2022 OPEN HOUSE

Algebra 1, Algebra 1 Honors, MCR

with Ms. Haymaker



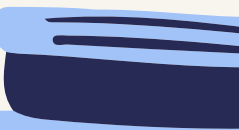


Ms. Courtney Haymaker grew up in Ocean City, New Jersey and moved to northeast Florida in May 2018. She earned a Bachelors degree in Business Management from Stockton University.

Ms. Haymaker began her career in St. Johns County as a substitute teacher in November 2019. From there, she was hired to finish the 2019-20 school year as a Financial Algebra and Algebra 1 teacher at Nease High School. Ms. Haymaker finished her first full year in the classroom at Nease, teaching both Algebra 2 and Math for College Readiness before starting at Toco Creek High School this year in the Algebra 1 and MCR classroom.

Besides teaching math, Ms. Haymaker serves as sponsor for the Freshman class, Student Council, and GSA. She is also the district Character Counts! representative for TCHS.

Outside of the classroom, she enjoys spending time with family, finding shark teeth on the beach, playing and watching golf, and traveling.



COMMUNICATION AND PARENT CONFERENCES:

email: Courtney.Haymaker@stjohns.k12.fl.us

phone: (904) 547-4260 ext. 80500

available times:

8:30 - 9:00 Mon - Fri

1:15 - 2:05 Thurs & Fri



IT IS IMPORTANT TO NOTE THAT ST. JOHN'S COUNTY SCHOOL DISTRICT TEACHERS HAVE UP TO 48 SCHOOL HOURS TO RESPOND TO A REQUEST FOR CONTACT. PLEASE DO NOT SUBMIT TIME SENSITIVE CONCERNS VIA EMAIL.

Year at a Glance Algebra 1 Honors

QUARTER 1

Ch. 1 - Solving Equations
and Inequalities
Ch. 2 - Linear Equations

QUARTER 2

Ch. 3 - Linear Functions
Ch. 4 - Systems of Linear
Equations and Inequalities
Ch. 6 - Exponents and
Exponential Functions

QUARTER 3

Ch. 7 - Polynomials &
Factoring
Ch. 8 - Quadratic Functions
Ch. 9 - Solving Quadratic
Functions

QUARTER 4

Ch. 5 - Piecewise Functions
Ch. 10 - Working with
Functions
Ch. 11 - Statistics
Ch. 12 - Polynomial and
Rational Expressions

SJCSD Year at a Glance: <https://www.stjohns.k12.fl.us/year-at-a-glance/>

Year at a Glance Algebra 1

QUARTER 1

Ch. 1 - Solving Equations
and Inequalities
Ch. 2 - Linear Equations

QUARTER 2

Ch. 3 - Linear Functions
Ch. 4 - Systems of Linear
Equations and Inequalities
Ch. 6 - Exponents and
Exponential Functions

QUARTER 3

Ch. 7 - Polynomials &
Factoring
Ch. 8 - Quadratic Functions
Ch. 9 - Solving Quadratic
Functions

QUARTER 4

Ch. 5 - Piecewise Functions
Ch. 10 - Working with
Functions
Ch. 11 - Statistics

SJCSD Year at a Glance: <https://www.stjohns.k12.fl.us/year-at-a-glance/>

Year at a Glance Math for College Readiness

QUARTER 1

Ch. 1 - The Real Number System
Ch. 2 - Fundamentals of Algebra
Ch. 3 - Equations, Inequalities, and Problem Solving

QUARTER 2

Ch. 4 - Graphs and Functions
Ch. 5 - Exponents & Polynomials
Ch. 6 - Factoring & Solving Equations

QUARTER 3

Ch. 7 - Rational Expressions, Equations, and Functions
Ch. 8 - Systems of Equations and Inequalities
Ch. 9 - Radicals & Complex Numbers

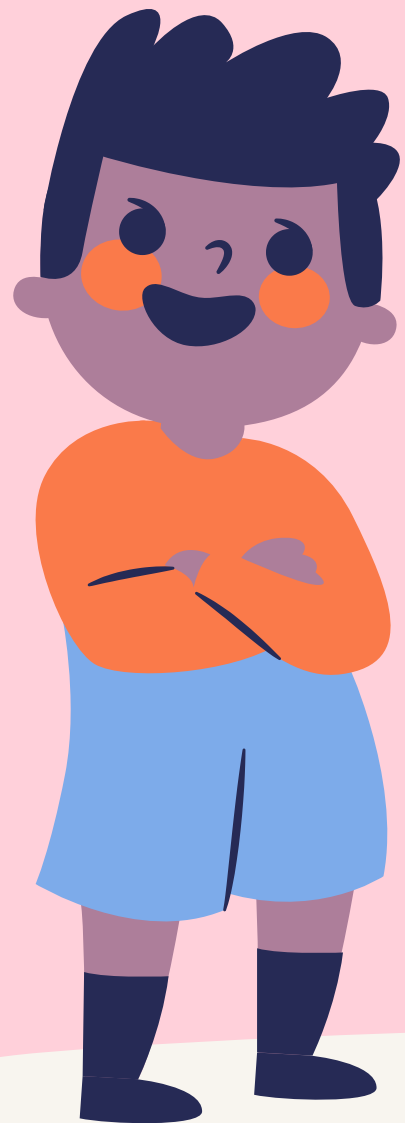
QUARTER 4

Ch. 10 - Quadratic Equations, Functions and Inequalities
Ch. 11 - Exponential and Logarithmic Functions

SJCSD Year at a Glance: <https://www.stjohns.k12.fl.us/year-at-a-glance/>

Homework

Homework assignments provide essential practice when preparing for the summative. Homework will be given most class periods. Homework assignments will be listed on the Topic Outline. Homework is due at the beginning of class; students will have the opportunity to check their work and ask questions. Late work will not be accepted; if a student is absent on the day homework is assigned or due, they will be excused from the assignment.



GRADING ALGEBRA 1 AND ALGEBRA 1 HONORS

Quarter grades will be determined by points earned in two weighted categories in HAC:

Summative (70%) – unit tests

Formative (30%) – homework, quizzes, classwork

HAC will be updated weekly; students and parents should check regularly to stay informed on current grades and contact me with any questions

Algebra 1 is a year-long course with an EOC Exam in May. The grading breakdown is as follows:

Quarter 1 – 17.5% Quarter 2 – 17.5% Quarter 3 – 17.5% Quarter 4 – 17.5% EOC – 30%

Grade Recovery: Any summative score below 85% is eligible for recovery up to a maximum 85%, if classroom requirements for retakes are met

GRADING MATH FOR COLLEGE READINESS

Quarter grades will be determined by points earned in two weighted categories in HAC:

Summative (70%) – unit tests

Formative (30%) – homework, quizzes, classwork

HAC will be updated weekly; students and parents should check regularly to stay informed on current grades and contact me with any questions

MCR is a year-long course in which two $\frac{1}{2}$ credits can be earned (per semester). The grading breakdown is as follows:

1st Semester	2nd Semester
Quarter 1 – 45%	Quarter 3 – 45%
Quarter 2 – 45%	Quarter 4 – 45%
District Midterm – 10%	District Final – 10%

Grade Recovery: Any summative score below 85% is eligible for recovery up to a maximum 85%, if classroom requirements for retakes are met



THANK YOU!

It is a pleasure to partner with you in this year's educational journey. We appreciate your continued support.

Horns Up.... T.O.C.O.!!