

TCHS Dual Enrollment 2025

Agenda

- Introduction
- Benefits
- Drawbacks
- Comparison
- Final tips & takeaways
- Resources

Dual Enrollment(DE) is a program that allows high school students to take college courses and earn college credit (based on grade earned) while still in high school.

Advanced Placement (AP) are college-level courses offered in high school, culminating in an exam for *potential* college credit(based on exam score). [AP EXAM SEARCH](#)





Benefits of Dual Enrollment

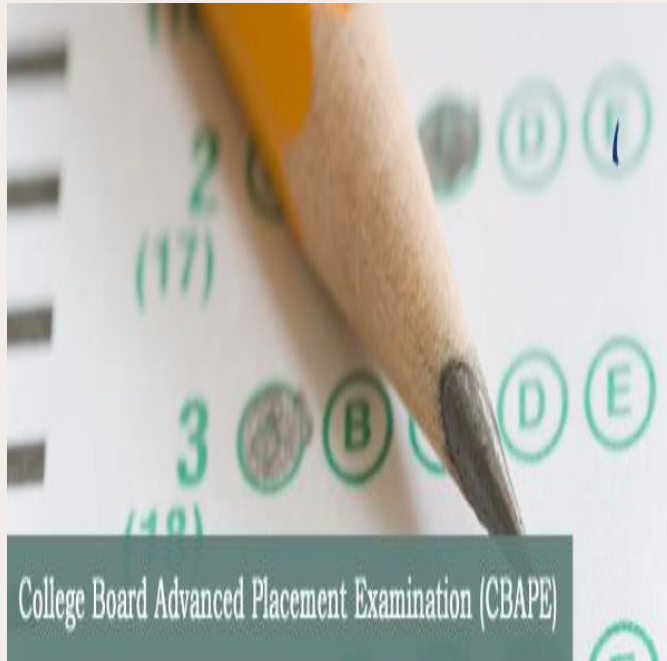
- Earn College Credit
- College GPA starts **HERE**
- Experience college level rigor
- Flexible learning options
- Flexible scheduling
- Potentially lower college costs

Drawbacks of Dual Enrollment

- **Starts College GPA**
- Requires eligible test scores
- Transferability
Issues/Prerequisite concerns
- Attending two schools/2
processes
- Course availability is limited
- Less traditional high school
experience
- Student directed-minimum
supports
- Overwhelming workload
- Can negatively affect Bright
Futures, Financial Aid, & College
Admissions



AP Course Benefits



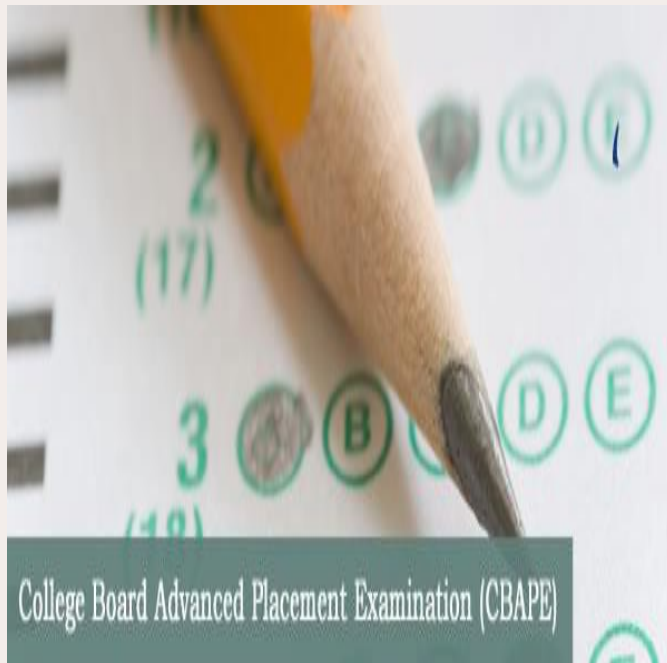
National Recognition

Structured Curriculum

Potential College Credit (through exam score)

Increased Rigor impressive on College Applications

AP Course Drawbacks



High Pressure/High Stress

High Intensity Exam at end of course

Not all colleges accept AP credits

Increased workload during school year

Student-directed/self-study

Which path is right for me?



Consider your goals-

-Specific college?

-Specific Major/Pre-req?



Assess your readiness-

-academic strengths?

-time management?

-good test taker?



Academic Strength does not equate to success in Dual Enrollment (Executive Functioning)

Am I Eligible?

3.0 Unweighted GPA

Test Scores (ACT, PERT, SAT,
PSAT NMSQT)

Tocoi Student

Approved by School Counselor and
Administration

Test Scores

ACT, PERT, SAT, PSAT
NMSQT are acceptable

Test scores must be LESS
than 2 years old

Electives –only need a
test score on file

Academic Courses-a
minimum test score is
required



Test & Course Placement	ACT	CLT	PERT	Digital SAT	SAT
ENC1101	19 Reading & 17 Writing	38 Sum of Verbal Reasoning & Grammar/Writing	106 Reading & 103 Writing	490 EBRW	24 Reading & 25 Writing
MAT1033	19-20 Math	16-18 Math	114 Math	480 Math	24 Math
MAC1105, STA2023	21-26 Math	19-40 Math	123-150 Math	490-560 Math	25-28 Math
MAC1147, MAC2233	27+ Math			570-600 Math	29-30 Math
MAC2311	30+ Math			610+ Math	31+ Math

Testing availability



[TCHS TESTING PAGE](#)

[ACT](#)

[SAT/PSAT](#)

[CLT](#)

PERT testing is available daily at the Testing Center at SJR.
[SJR TESTING CENTER](#)

PERT is offered periodically at TCHS for ECP PROGRAM ONLY(not preferable option)

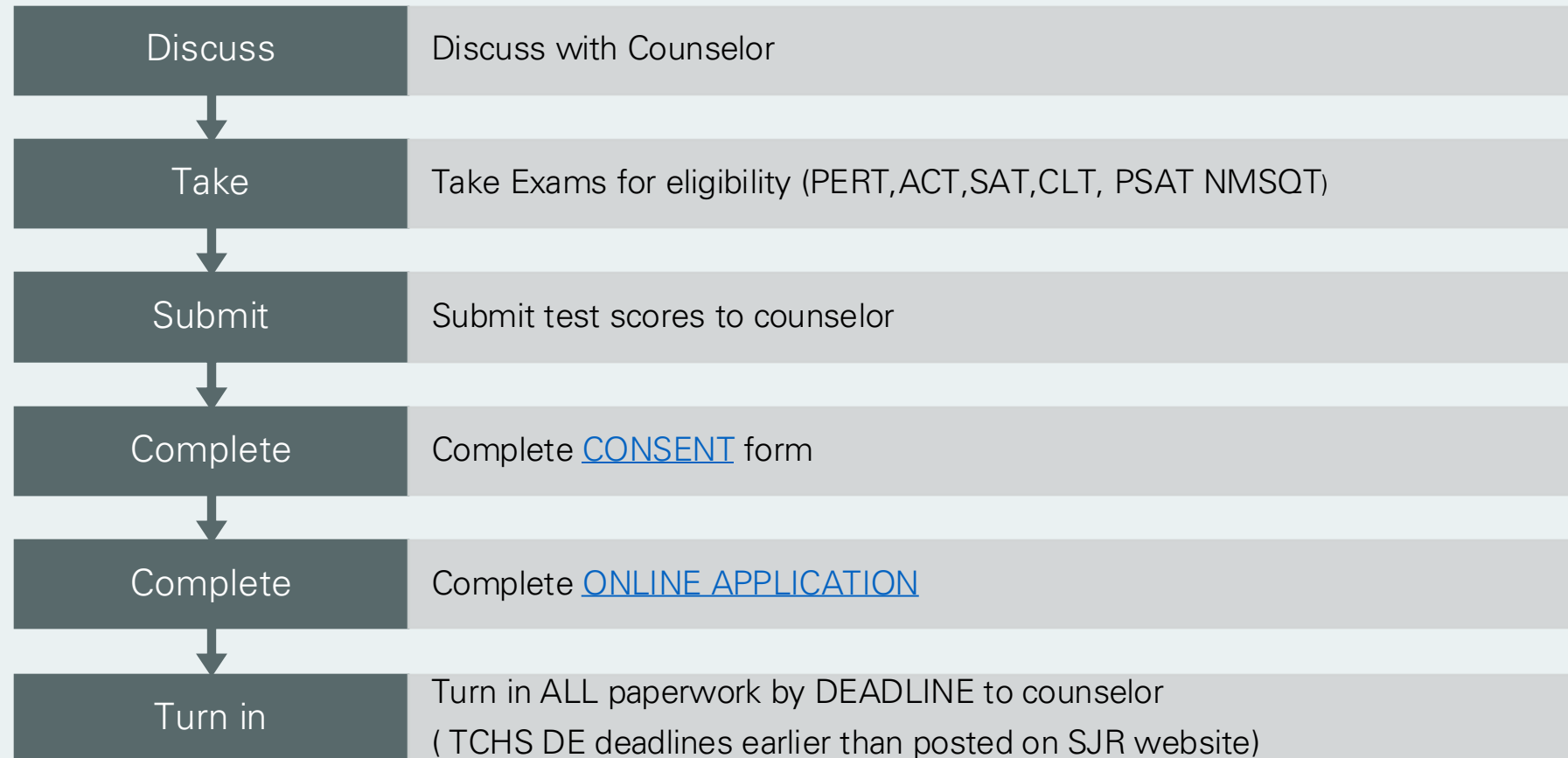
Civic Literacy Exam (AA requirement)- offered at SJR

SJR testing department -386-312-4228 Palatka

SJR testing department -904-808-7417 St. Aug

[TCHS TESTING PAGE](#)

Next Steps (New to DE)



CAUTION

Dual Enrollment and AP courses can be an excellent opportunity if managed effectively.

The high school counselor does not advise on AA degree completion and SJR counselors do not advise on high school graduation.

The college does NOT communicate with the school or the parent's concerning grades, due dates, timelines, missing paperwork, registration windows, etc.. Their main form of communication is email to student. All other information is found on their website. (*Parent driven students may not do well in DE*)

High Achieving Students who struggle with time management and turning work in should strongly reconsider whether Dual Enrollment will be beneficial to your goals.

Students who are very strong in organization and academic preparedness, but maybe do not test well, may find a place in Dual Enrollment courses *as long as they meet eligibility*.

It is NOT advised to take the ACT/SAT prior to completing ALG 2. The student will not have the base knowledge for success in the test.

It is the **student/parent's responsibility** to assure they have tested and earned the needed test scores to be eligible for 11th grade progression courses which include ENC 1101 and MAC 1105. **Students will be removed from the program if test scores keep a student from being eligible for Dual Enrollment or ECP.**

I'm eligible, now what?

- After completing all paperwork and approval is given by counselor, it is time to select courses
- Course selection is typically based on considerations of completing the AA degree. [SJR AA Course Catalog](#)
- Select course [Course Availability Search](#) (*ECP students have "programmed" courses until end of JR year*)
- Complete your [SJR Registration Form](#)
- Include alternates for each course
- Return form to counselor for submission
- Check ALL information is included **AND LEGIBLE**
- Check your **SJR (MYSJRSTATE) concise schedule** daily 2 weeks after submittance to counselor for assurance of registration completion. Counselors do NOT KNOW the status of registrations once they have been sent. *SJR emails are typically Jsmith@vikings.sjrstate.edu*

TEXTBOOKS FOR DUAL ENROLLMENT

Textbooks issued by SJCSD

Link for textbooks shared in counseling office and on DE Schoology page

Must be picked up in person (8-3 M-F) in St. Augustine

ID, Printed student schedule required for pick up

It is the student's responsibility to assure they have the textbooks they need for the course. (ACCESS CODES SHOULD BE ISSUED AT TIME OF BOOK PICKUP)

Important Takeaways:

There is NO HAC-the college will NOT communicate with parents

Student is responsible party

ALL DE courses will be placed on your high school AND college transcript- NO EXCEPTIONS!

It is the STUDENT'S responsibility to declare their need for accommodations to the Student Disabilities Services Department. *HS based DE courses WILL NOT provide accommodations if this is not completed*

DE students have access to all SJR resources- advising, tutoring, writing center, library, etc.

Full time DE students can participate in HS activities; however, it is THEIR responsibility to get the information to meet deadlines (BullPen, Friends, Schoology Pages, etc...)

Students must access SJR EMAIL SYSTEM regularly! This is how the college will communicate with the student.

Transportation is STUDENT'S responsibility.

Courses are offered in many platforms (online, day classes, night classes, Hybrid classes, Full Term, A term, B term, etc..) You are responsible for what YOU sign up for

Other Important Info/Logistics

DE courses are online or at SJR Campuses

Campus Locations- Palatka, Orange Park, and St. Augustine

Live/Synchronous or Asynchronous

Transportation is YOUR responsibility/ A PARKING PASS is NOT guaranteed at TOCOI

For each college course-2 Toco periods are modified. Schedules will not be adjusted after the start of the school year to accommodate DE courses.

Students are required to LEAVE TCHS campus if they are not scheduled during that period at TCHS.

There are NO LABS at TCHS to complete DE courses unless you are in the ECP academy program.

Deadlines and dates for TCHS and SJR are different. You must keep track of everything as though you are a full-time college student.

DE is not for everyone! Success comes to those that are responsible, SELF-driven, a good communicator, a self-advocate and organized.

Additional Resources

- ❖ [AA degree 2024-2025](#)
- ❖ [DE to AA Pathway](#)
- ❖ [DE General Info TCHS site](#)
- ❖ [DE SJR Info TCHS site](#)
- ❖ [SJR State – Dual Enrollment, Early Admissions, Early College Program](#)
- ❖ [Course & Exam Pages – AP Central | College Board](#)
- ❖ [Bright Futures College GPA expectations](#)
- ❖ [SJR Course Registration Instructions](#)
- ❖ [DE Prerequisite Guide](#)

Thank you

Angelia Sletto- [Email](#)

SJR DE office- 386-312-4136

ReneeRuffalo@sjrstate.edu

TCHS Schoology DE

Access Code: RCGS-QGPH-RZCG6

TCHS Schoology School Counseling

Access Code: 42BP-PCPC-Q5DCN